



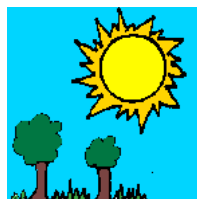
Weather



We



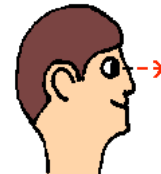
look



outside



and



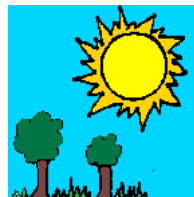
see



what



the weather is for the



day.

The



season

200_



makes a



big



difference



in

of the

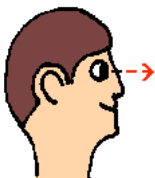
year



what



we



see.

If



it

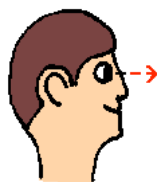
is



spring,



we

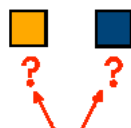


might

see



sun



or

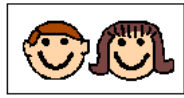


rain.

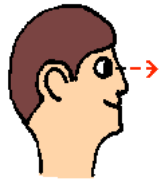
During



winter,



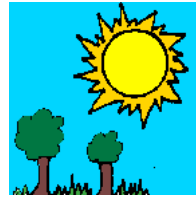
we



see



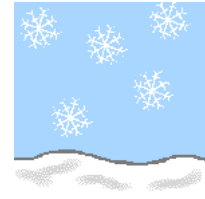
cold



days



and



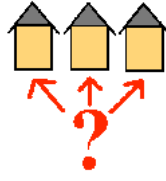
snow.



Autumn is a



season



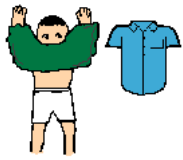
where



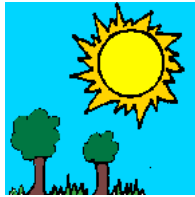
the weather



can

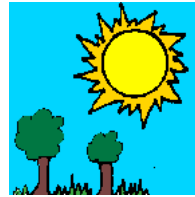


change from



day

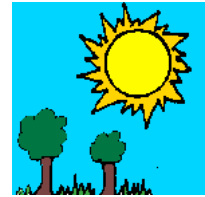
to



day.



Some



days



may be warm



and



feel



like



summer,



while others may be colder



and



feel



like



winter.



Summer is usually the warmest



season of

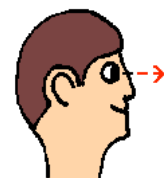
200_



the year.

It

would be unusual to



see



snow



in



summer.



Precipitation



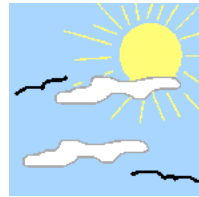
is moisture



that



comes



from the sky.



When the



air is



warm,



the precipitation



is rain.

If the



air

is cold,

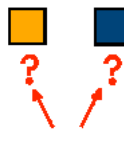


the precipitation

may be



snow



or



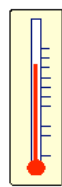
sleet.



The

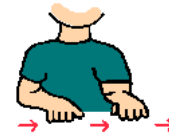
air

temperature



has

a lot to



do

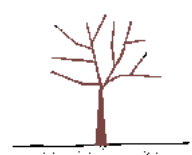


with the season of the year.

200_



In



winter,



cold



air

from the



Arctic



comes



down



and



makes

the



air



in

the United States



cold,

too.